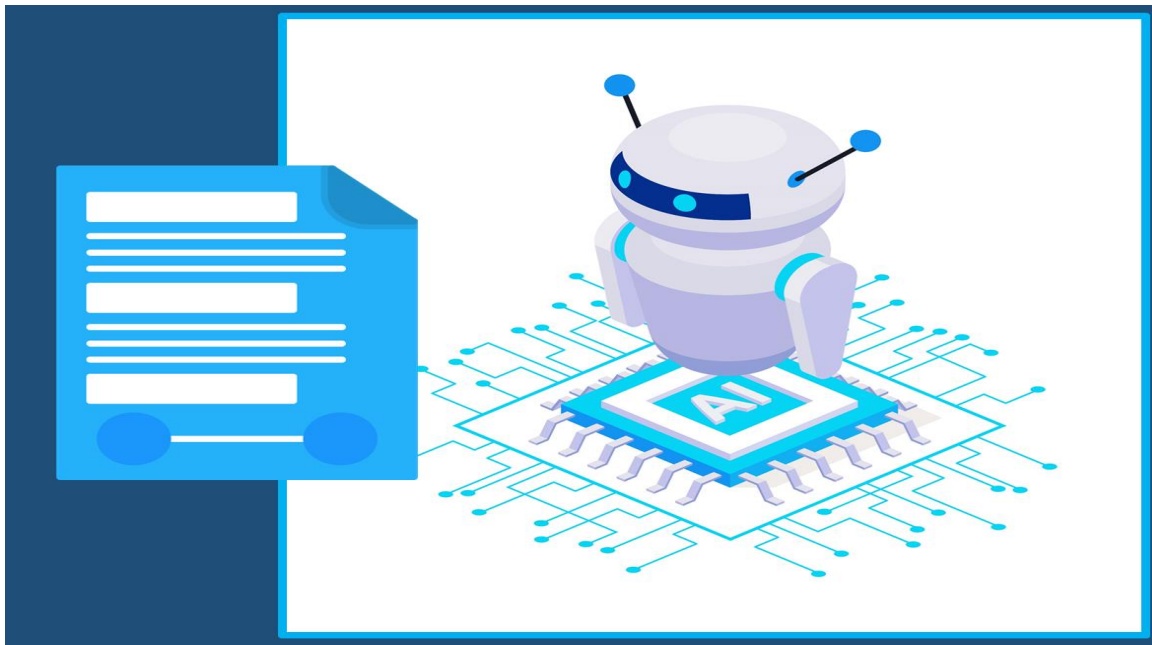


Automating Manual Workflows with Doc Bot: Industry-Wide Use Cases



In today's fast-paced business landscape, efficiency and automation are the keys to staying ahead. Enter the Doc Bot, a revolutionary tool powered by advanced Deep Learning algorithms. With the capability to extract data from both structured and unstructured documents, the Doc Bot is transforming the way organizations handle complex manual workflows. From banking and finance to shipping, logistics, insurance, and process industries, the Doc Bot is a game-changer. Let's explore how this innovative technology is reshaping industries with its diverse range of use cases.

Banking & Finance Companies: Accelerating Lending Decisions

For B2C and B2B lending, extracting data from documents like bank statements, salary slips, income tax returns, and financial statements is a time-consuming process. Manual extraction could take hours, leading to delayed lending decisions. With the Doc Bot, this challenge is overcome swiftly. By automating data extraction, lending decisions that once took hours are now made within minutes. The Doc Bot's rapid data processing ensures quicker and more informed lending choices, revolutionizing the lending landscape.

Shipping, Logistics & E-commerce: Streamlining Procure-to-Pay

Procure-to-pay processes involve handling numerous invoices from suppliers, a task that demands significant human effort. Manually extracting data from PDF invoices and inputting it into payment systems is not only tedious but error-prone. The Doc Bot steps in as a solution, automating the extraction of data from invoices of varying formats. With the Doc Bot's accuracy, invoices are processed swiftly and accurately, enabling on-time payments and streamlining operations.



Insurance Companies: Enhancing Claims Processing

Claims processing is a crucial aspect of insurance operations, often involving large amounts of manual data entry from submitted documents. The Doc Bot alleviates this challenge by automating data extraction from various documents like pathology reports, hospital bills, and policy documents. This results in faster claims processing, reduced errors, and an overall improvement in operational efficiency.

Process Industries: Simplifying Component Identification

Piping and instrumentation diagrams (P&IDs) are critical for process industries. Extracting component codes from these diagrams for pricing purposes can be a time-consuming endeavor. Enter the Doc Bot, which can accurately identify symbols and extract component codes from P&ID diagrams. By automating this task, the Doc Bot significantly reduces the time and effort required for generating accurate bills of material.

Unlocking Opportunities Across Industries

The Doc Bot's potential extends far beyond these sectors. It can be applied to various industries, automating trivial human tasks and enhancing operational efficiency. Whether it's speeding up processes, reducing errors, or freeing up valuable human resources, the Doc Bot's impact is profound.

Conclusion: Transforming Business Operations

In a world where efficiency and agility are paramount, the Doc Bot is a beacon of change. With its ability to process data from structured and unstructured documents, it seamlessly integrates into diverse industries. From financial institutions to logistics giants, the Doc Bot revolutionizes workflows, enabling organizations to focus on what truly matters - innovation, growth, and delivering exceptional value to customers.

As organizations across the globe continue to embrace automation, the Doc Bot stands as a testament to the power of cutting-edge technology in reshaping industries for the better. With its diverse range of use cases, the Doc Bot is not just a tool; it's a catalyst for change, propelling industries into a future of streamlined operations and enhanced productivity.